

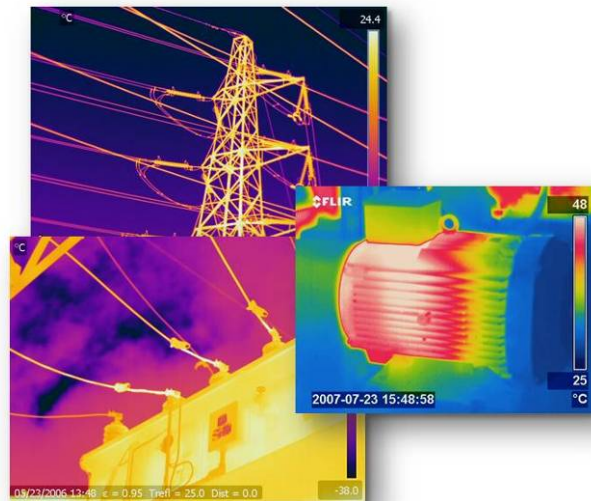
**Sample Thermography Inspection at**

**ABC Company**

**December 2007**

**By**

**Pumptec Diagnostics**



Pumptec Diagnostics  
Bidston House, Old Bidston Road, Birkenhead, Merseyside, CH41 8EL  
Phone: +44 (0)151 651 2555, e-mail: [enquiries@pumptecdiagnostics.com](mailto:enquiries@pumptecdiagnostics.com)



	<b>Thermography Inspection At ABC Company</b>	<b>Date: December 2007</b>
---	---	--------------------------------

Inspection Site Information	
Customer	ABC Company
Address	123 High Road
Contact person	A.Nother
E-mail address	A.Nother@Work.com
Thermographer	Gary Mallon

**INFORMATION**

The following report concerns a thermographic survey of all electrical control panels within ABC Company. The survey was conducted on December 2007 and examined all available electrical Control Panels in ABC Company. It should be noted that this report is limited in its' scope, due to the operational characteristics of the plant.

Where reference is made within the report concerning suspected poor connections it does not necessarily mean that the connection is loose. Other causes could be broken crimp connections, insufficient wire within the connector, over tightened terminals or poor contact due to insulation material being trapped. It is always advisable to remake the connection rather than just tighten, to ensure the problem has been rectified.

The thermographic instrument used was a Flir P65 ThermaCAM, coupled to ThermaCAM Reporter 8.2 Professional. Each image captured was with a nominal emissivity of .95 and target distance of 1 meter. All visual images were captured using the Flir ThermaCAM Built in Digital Camera.

In the following report a colour coded system is used to identify the severity of the fault detected. A brief explanation of the codes follows, but are based upon standard industry practice. No absolute standard can be applied, as all installations are unique in their operating environment and this must be considered when evaluating the severity of the fault.

**Overview of Fault Rating:**

**Red Code** Immediate and urgent repair must be undertaken as the item is at imminent risk of failure, with potential for harm to both personnel and plant.

**Yellow Code** Repair is recommended at the earliest convenient opportunity, and thought should be given to enacting the repair as soon as possible.

**Green Code** Equipment running in normal condition however, continuous monitoring should be in place.

It should be noted that defects reported at **Red Code** requires immediate repair as there is a serious Health and Safety risk involved. In practice any such defects are either at a temperature such that fire is a serious possibility, or that the insulation on the electrical connections has degraded to such a point that electrical shock risk is very high.

	<b>Thermography Inspection At ABC Company</b>	<b>Date: December 2007</b>
---	---	--------------------------------

**Summary of Inspection**

Location	Equipment	Type	Fault	Recommendation	Fault Code	Page Number
Ground Floor	Panel 1	Contactor	Loose Connection	Strip, Clean and re-make connection	Yellow	4
Ground Floor	Panel 2	Contactors	Load	Check Load	Yellow	5



**Thermography Inspection  
At  
ABC Company**

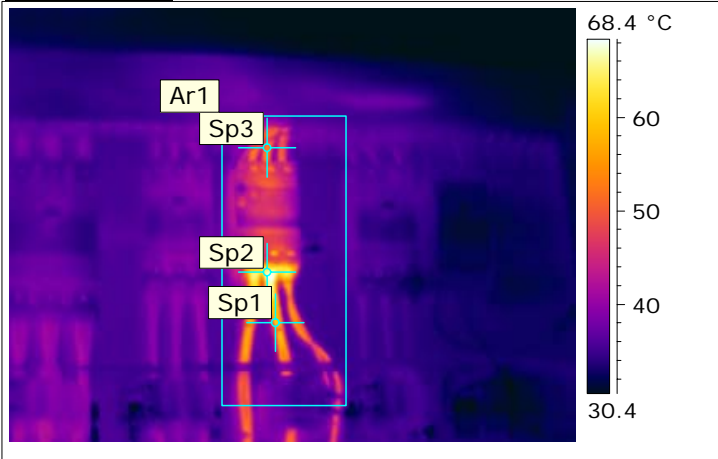
**Date:  
December 2007**

**Photo and Identification**



Location	Ground Floor
Equipment	Panel 1
Type	Contactors
Fault	Loose Connection
Recommendation	Strip, Clean and re-make connection
Fault Code	<b>Yellow</b>

**Thermogram**



Sp1 Temperature	60.0 °C
Sp2 Temperature	69.5 °C
Sp3 Temperature	54.3 °C
Ar1 Max. Temperature	70.8 °C

**Analysis & Recommended action:**

There seems to be a temperature difference on the connections at the bottom of the contactor than the top. We recommend to strip, clean and re-make all the connections to this contactor, at the next available opportunity.

(Hot Water Rinse Spray Pump Contactor)

**Inspected by :** Gary Mallon

**Date:** December 2007

Repaired by: .....

Date:

Comment:.....

Pumptec Diagnostics  
Bidston House, Old Bidston Road, Birkenhead, Merseyside, CH41 8EL  
Phone: +44 (0)151 651 2555, e-mail: [enquiries@pumptecdiagnostics.com](mailto:enquiries@pumptecdiagnostics.com)



**Thermography Inspection  
At  
ABC Company**

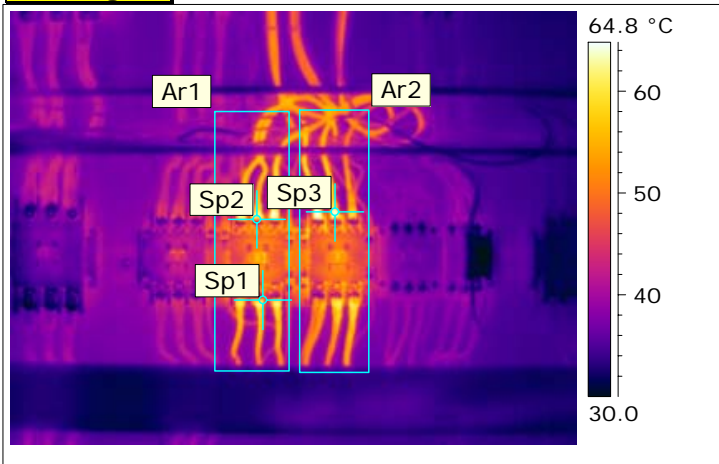
**Date:  
December 2007**

**Photo and Identification**



Location	Ground Floor
Equipment	Panel 2
Type	Contactors
Fault	Load
Recommendation	Check Load
Fault Code	<b>Yellow</b>

**Thermogram**



Sp1 Temperature	57.2 °C
Sp2 Temperature	47.5 °C
Sp3 Temperature	65.4 °C
Ar1 Max. Temperature	65.6 °C
Ar2 Max. Temperature	66.5 °C

**Analysis & Recommended action:**

The contactors shown in Ar1 box and Ar2 box are at a higher temperature than the rest of the contactors which shows a possible load problem. We would recommend to check the load at the next available opportunity.

The contactors are marked with an X1 and X2

**Inspected by :**

**Gary Mallon**

**Date: December 2007**

Repaired by: .....

Date:

Comment:.....

Pumptec Diagnostics  
Bidston House, Old Bidston Road, Birkenhead, Merseyside, CH41 8EL  
Phone: +44 (0)151 651 2555, e-mail: [enquiries@pumptecdiagnostics.com](mailto:enquiries@pumptecdiagnostics.com)